



# GUNNEDAH PRECINCT

## NEWSLETTER

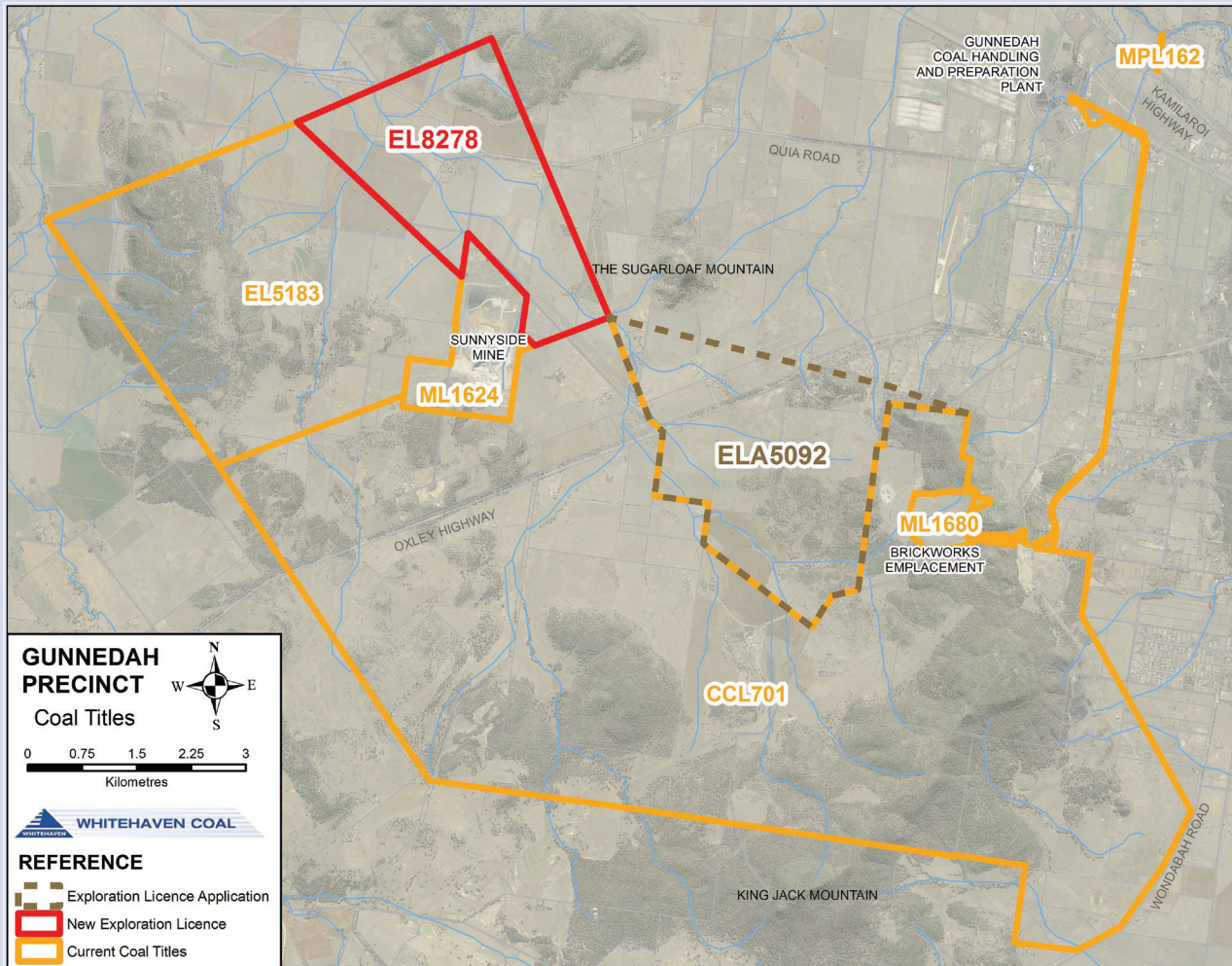
SUMMER 2014

### SUNNYSIDE COAL MINE

The Sunnyside Coal Mine (Sunnyside) was placed into care and maintenance in October 2012 following a strategic review of operations. While mining has been suspended, environmental monitoring and the rehabilitation program remain active. The decision to place Sunnyside into a care and maintenance phase was made as a result of declining coal prices applicable to the quality of marketable coal at Sunnyside.

While there is currently no mining taking place at Sunnyside, Whitehaven will shortly be making an application to extend the Sunnyside Approval timeframe by five years to 2020. The application will not seek to extend the footprint of the operation beyond what is already approved.

To support the application Whitehaven has commissioned updated assessments of dust, noise and traffic impacts. The Company will be cooperating with Gunnedah Shire Council in terms of updated traffic counts and has provided details on general road safety matters identified by its traffic consultants while undertaking the update. It is expected that the application and associated documentation will be on public display within the next few months.





**WHITEHAVEN COAL FACTS AND FIGURES**

Whitehaven is committed to building relationships with our local communities. We have a 15 year history in the Gunnedah region. Here are some facts and figures about the company and our role in the community:

We are an important local employer. Of our 655 full time employees, 75% live and work in the area of our operations in North West NSW.

Our workforce is set to grow further, surpassing 1,100 people in the next 5 years.

In 2014, our support for the local economy included paying over \$110.2m in salaries, wages, tax and superannuation to our employees (on a 100% joint venture basis).

Over the past year we have donated more than \$150,000 to local health and education activities along with multiple charitable and community groups.

In 2014, the Company paid \$70.8m in royalties to the NSW Government.

**NEW EXPLORATION LICENCE GRANTED**

In July 2014, an Exploration Licence (EL) to the north of the Sunnyside Mine (EL8278) was granted to Namoi Mining Pty Ltd by the Minister of Resources and Energy.

A Review of Environmental Factors, a Groundwater Monitoring and Modelling Plan, Landowner Access Arrangements and an Agricultural Impact Statement will be prepared, submitted and approved by the NSW Division of Resources and Energy before exploration can commence on the tenement. Once approved, exploration drilling is likely to occur over a one month campaign.

**EXPLORATION LICENCE APPLICATION**

The Minister of Resources and Energy has recently given permission to Whitehaven Coal Limited to apply for an Exploration Licence approximately 7 km west of Gunnedah.

The permission follows a public exposure test completed during 2013. Exploration Licence Application 5092 occurs over an area of 936 hectares located near Pyramid Hill.



**CONTACT DETAILS**

**ENVIRONMENTAL ENQUIRES**

**Jill Johnson**

Group Environmental Manager

Phone: (02) 6741 9321

Fax: (02) 6742 3607

Email: [jjohnson@whitehavencoal.com.au](mailto:jjohnson@whitehavencoal.com.au)

**COMMUNITY ENQUIRIES**

**Tim Muldoon**

Group Manager Community Relations and Property

Phone: (02) 6741 9302

Fax: (02) 6742 3607

Email: [tmuldoon@whitehavencoal.com.au](mailto:tmuldoon@whitehavencoal.com.au)

FOR MORE INFORMATION PLEASE VISIT  
[www.whitehavencoal.com.au](http://www.whitehavencoal.com.au)

